

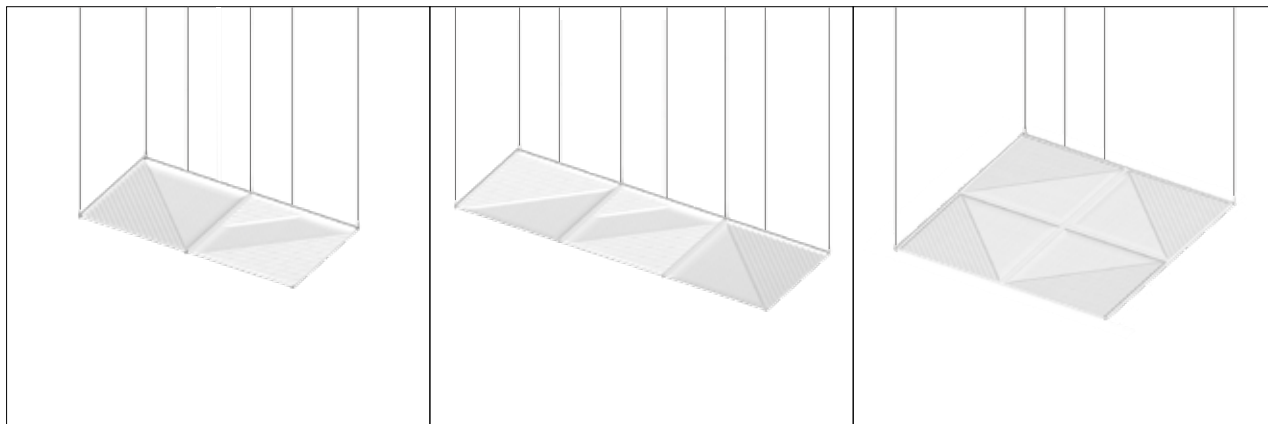
# OBLIQUE COLLECTION

**CEILING**

## CEILING: OBLIQUE COLLECTION

## SIZES

Double-sided structure: approx. 35 mm thick



**C2** (120 x 60 cm)

**C3** (180 x 60 cm)

**C4** (120 x 120 cm)



## FLAME RESISTANCE

---

Euroclas B-s2,d0

## VOLATILE ORGANIC COMPOUND EMISSION

---

VOC A+

Indoor Air Comfort GOLD



NO FORMALDEHYDE

## CAM REQUIREMENTS

---

Complies with the requirements defined by CAM Edilizia for acoustic and thermal insulation materials regarding the demand for high acoustic absorption performance, recycled content percentage, and the absence of hazardous substances.



## REMADE IN ITALY CERTIFICATE

---

The Ceiling application carries the REMADE IN ITALY certification, an ACCREDIA-accredited product certification that verifies the recycled content incorporated into each product. This certification is accepted during bidding and awarding phases, in compliance with public procurement regulations and Minimum Environmental Criteria (MEC) requirements



100% RECYCLABLE



ECO-FRIENDLY

## ENVIRONMENTAL PROTOCOLS

---

Contributes to earning credits toward building environmental certification under both LEED and ITACA protocols.

## SHORT SUPPLY CHAIN

---

The entire lifecycle is managed within Italy, significantly reducing the environmental impact associated with transportation of raw materials, semi-finished products, and the final product.



MADE BY ITALIANS

## HI-TECH MATERIALS

---

Isospace Oblique solutions are made from FIBTEC<sup>®</sup>, a special completely non-toxic and hypoallergenic polyester fiber, obtained from recycled PET. This material has a high sound absorption coefficient, is environmentally friendly and long-lasting.

The internal FIBTEC<sup>®</sup> structure is then covered with Trevira<sup>®</sup> fabrics, materials with a natural texture that are soft to the touch yet durable, easily washable, and long-lasting. Trevira fabrics are certified with the highest ratings according to Oeko-Tex Standard 100.



Every square meter of FIBTEC<sup>®</sup> is produced by recycling 39 PET bottles

## CE MARKING

---

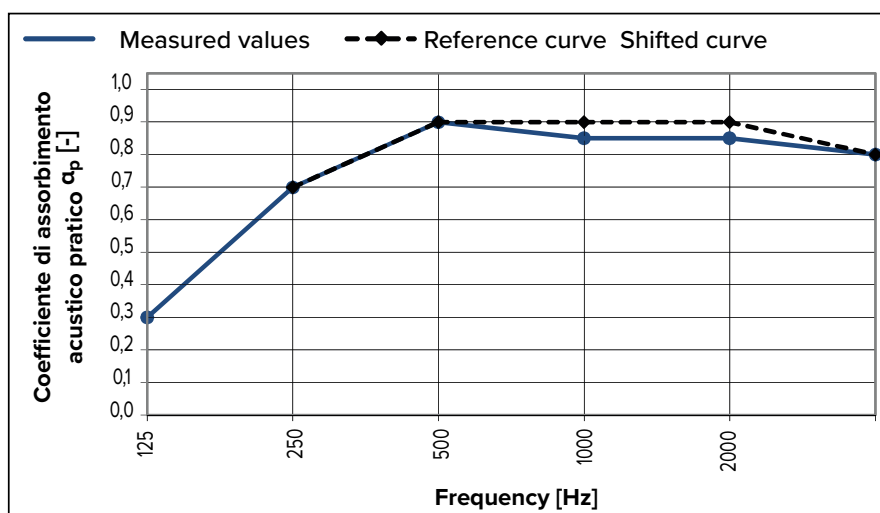
Isospace Ceiling solutions bear the CE marking in compliance with EN 13964:2014 standards.



## SOUND ABSORPTION

Sound absorption measurement in reverberation room (UNI EN ISO 11654:1998)

f [Hz]	$\alpha_p$ [-]
Frequency	Practical sound absorption coefficient values
125	0,30
250	0,70
500	0,90
1000	0,85
2000	0,85
4000	0,80



$\alpha_w$	0,90 CLASS A	Weighted sound absorption coefficient Sound absorption class	UNI EN ISO 11654:1998
------------	-----------------	---	-----------------------

## DURABILITY



LIGHTWEIGHT



EASY TO HANDLE



EASY TO CLEAN\*

\*For optimal panel cleanliness, use a vacuum with a smooth nozzle (without brushing) or a dry microfiber cloth.

## SPECIFICATION ITEM: ISOLSPACE OBLIQUE CEILING

Three-dimensional, double-sided modular sound-absorbing panel for ceiling application with ceiling suspension installation method, composed of IsoFiBTEC, a special polyester technical textile fiber engineered to achieve maximum sound-absorbing capacity, covered with Trevira CS polyester fabric. Thickness approx. 35 mm. Featuring Oblique surface design.

Can be visibly applied in rooms suspended from the ceiling using a special ceiling hanging kit. Variable formats (120x60cm, 180x60cm, and 120x120cm).

Finishing color to be selected by the Construction Manager; available in single-color or two-tone versions. Acoustic absorption coefficient Class A, tested in a reverberation chamber both with an air gap (Type J mounting) and as a Discrete Object according to UNI EN ISO 354 standards.

Absence of volatile and harmful organic substances certified by achieving the highest score in VOC (A+) and Indoor Air Comfort (GOLD).

The product contains third-party certified recycled content that meets Minimum Environmental Criteria (MEC) requirements for sustainable procurement. Euroclass B-s2,d0 fire reaction certification.

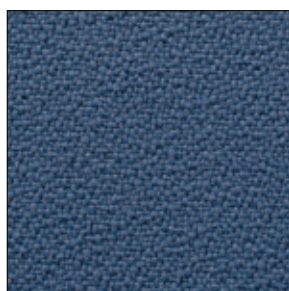
## COLORS AND FINISHES - PALETTE NATURE S - FABRIC 100% PL Trevira CS ECO

The Isospace Oblique Collection color palette draws inspiration from the natural world, creating refined environments that provide authentic and complete wellbeing. The colors in the palette are available for all versions of Isospace Oblique Collection. The upholstery features 100% PL Trevira CS ECO fabric, sustainably manufactured from recycled post-consumer PET bottles. The fabric stands out for its exceptional sustainability credentials, containing a minimum of 50% recycled material in each filament. It is GRS (Global Recycled Standard) and OEKOTEX certified, fire retardant and 100% recyclable. Pleasant to the touch, it cleans easily and is highly resistant to wear.

Custom colors can be requested for specific design requirements and quantities. Prices may differ compared with standard colors.



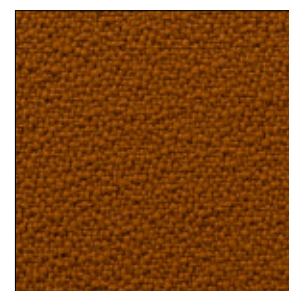
ALPACA / CODICE 999



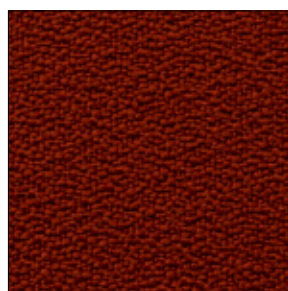
DOLPHIN / CODICE 377



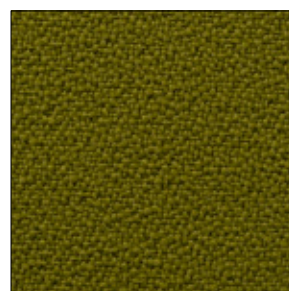
CARIBOU / CODICE 533



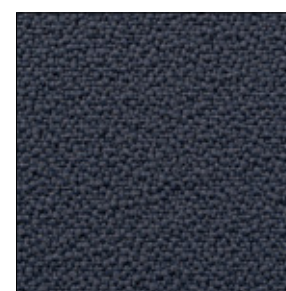
GIRAFFE / CODICE 119



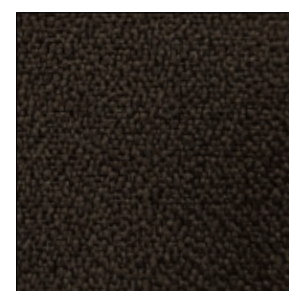
FOX / CODICE 572



IGUANA / CODICE 426



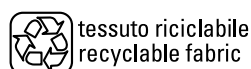
WHALE / CODICE 636



PANTHER / CODICE 573



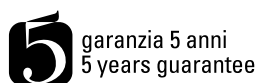
tessuto riciclato  
recycled fabric



tessuto riciclabile  
recyclable fabric



acustico  
acoustic



garanzia 5 anni  
5 years guarantee



colori speciali  
special colours



### NOTE

**When placing your order**, please **specify the color code** for each product selected.

**Color variations may occur between different production batches.** Such subtle color variations between fabric batches are inherent to high-quality textile manufacturing processes and are not considered defects in the product.

## CAUTIONS

---

This data sheet does not constitute a specification, and if it consists of multiple pages, please ensure you have reviewed the complete document. The guidelines provided reflect our expertise but serve as general recommendations only. Users assume full responsibility for determining product suitability for specific applications and any consequences of use.

Please be aware that panels may exhibit minor variations in thickness and dimensions due to the properties of the materials used in manufacturing.

**Isospace is a Tecnasfalti brand**

via dell'Industria, 12

Loc. Francolino

20074 Carpiano (MI)

T. +39 02 9885701

E. [hello@isospace.it](mailto:hello@isospace.it)

[isospace.com](http://isospace.com)