

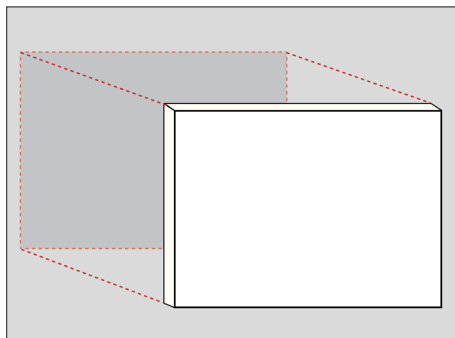
FRAME COLLECTION

WALL

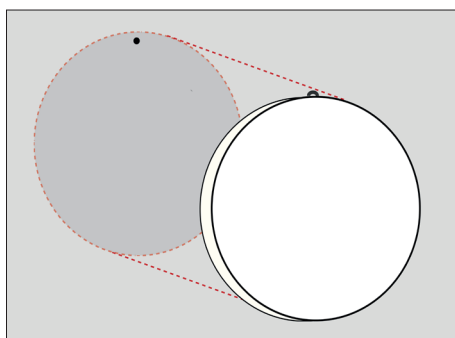
STYLE COLLECTION | WALL

SIZES

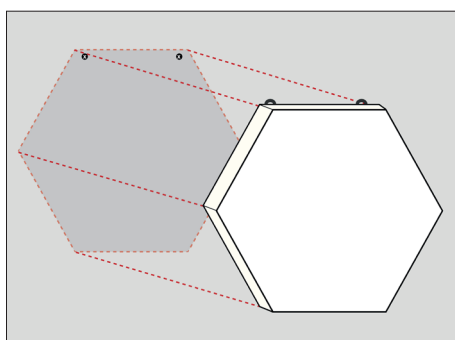
One-sided structure: approx. 45 mm thick

RECTANGULAR

50x70 cm
70x100 cm
100x140 cm

CIRCULAR

diameter 45 cm
diameter 65 cm
diameter 85 cm
diameter 125 cm

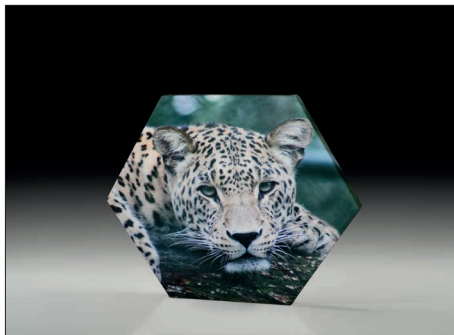
HEXAGONAL

diagonal 65 cm
diagonal 85 cm

FINISHES AVAILABLE

ORIGINAL

- The acoustic fabric covering the panel is printed with images, graphics, or photographs, and the print continues seamlessly onto the sides of the panel. Frame is completely removable.



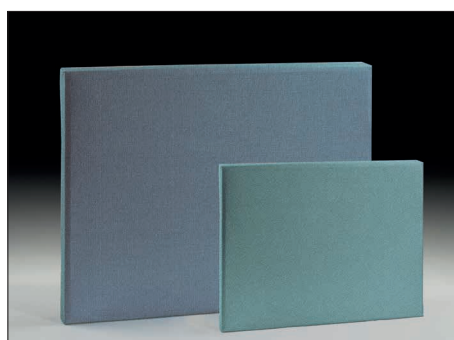
PANTONE®

- The acoustic fabric covering the panel is printed in a solid color, chosen from the infinite range of Pantone® shades, and the print continues seamlessly onto the sides of the panel. Frame is completely removable.



FABRIC

- The panel is covered with fabric, selected from two color palettes, and the covering continues seamlessly onto the sides. Frame is completely removable.



NOTE

The customer-supplied images will be adapted to the panel format through a machining process, which may result in slight variations in framing. **To ensure an optimal result, keep graphics, text and subjects of primary interest at least 5–7 cm from the outer edge.**



FLAME RESISTANCE

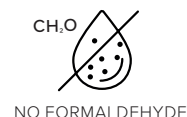
ISOLFIBTEC® Panel: Euroclass B,s2-d0

Frame: Non-combustible steel

Fabric covering: Euroclass B,s1-d0

VOLATILE ORGANIC COMPOUND EMISSION

VOC A+



CAM REQUIREMENTS

Complies with the requirements defined by CAM Edilizia for acoustic and thermal insulation materials regarding the demand for high acoustic absorption performance, recycled content percentage, and the absence of hazardous substances.



REMADE IN ITALY CERTIFICATE

REMADE IN ITALY certification is an ACCREDIA-accredited product certification that verifies the recycled content incorporated into each product. This certification is accepted during bidding and awarding phases, in compliance with public procurement regulations and Minimum Environmental Criteria (MEC) requirements.



100% RICYCLABLE



ECO-FRIENDLY

ENVIRONMENTAL PROTOCOLS

Contributes to earning credits for the main environmental building certifications, such as the LEED, BREEAM, WELL, and ITACA protocols.

SHORT SUPPLY CHAIN

The entire lifecycle is managed within Italy, significantly reducing the environmental impact associated with transportation of raw materials, semi-finished products, and the final product.



MADE BY ITALIANS

HI-TECH MATERIALS

Frame Collection solutions are made of ISOLFIBTEC®, a special polyester fibre that is completely non-toxic and non-allergenic, obtained from recycled PET. It is a material with a high sound absorption coefficient, environmentally friendly and long-lasting. The internal structure in ISOLFIBTEC® is inserted into a concealed frame designed to combine lightness and solidity. Frame can be covered with an acoustic fabric that is printed using an innovative printing technology that maintains its characteristics. Alternatively, it can be upholstered with fabrics from the available palettes, materials with a natural and sustainable weave that are soft to the touch but at the same time resistant, easily washable and highly durable.

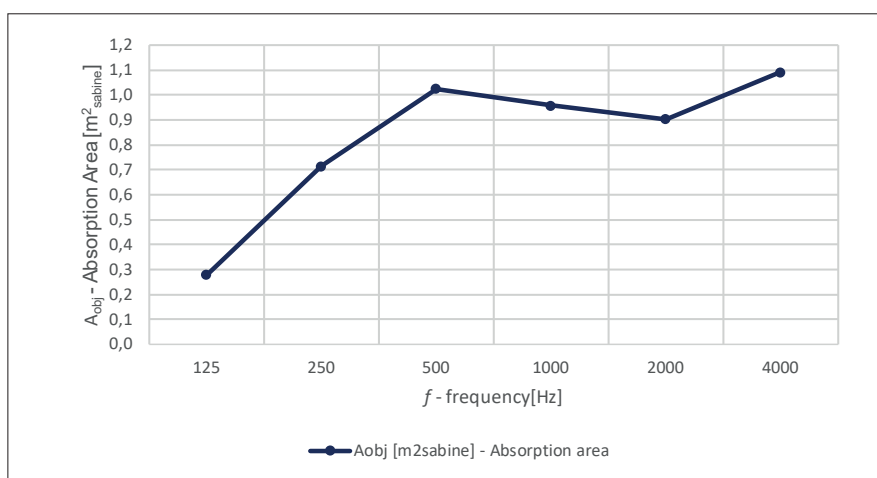


Every square meter of ISOLFIBTEC® is produced by recycling 39 PET bottles

SOUND ABSORPTION

Sound absorption measured in reverberation chamber (UNI EN ISO 354)

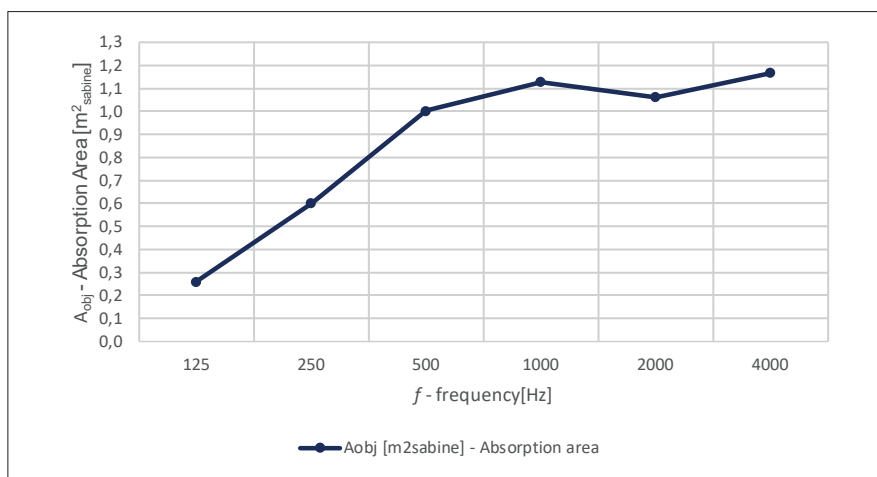
f [Hz]	Aobj [m ²]
Frequency	Absorption Area Equivalent
125	0,28
250	0,71
500	1,03
1000	0,96
2000	0,90
4000	1,09



Test performed with panel size 70x100 cm with **Fabric Palette Terranova** finish.

Sound absorption measured in reverberation chamber (UNI EN ISO 354)

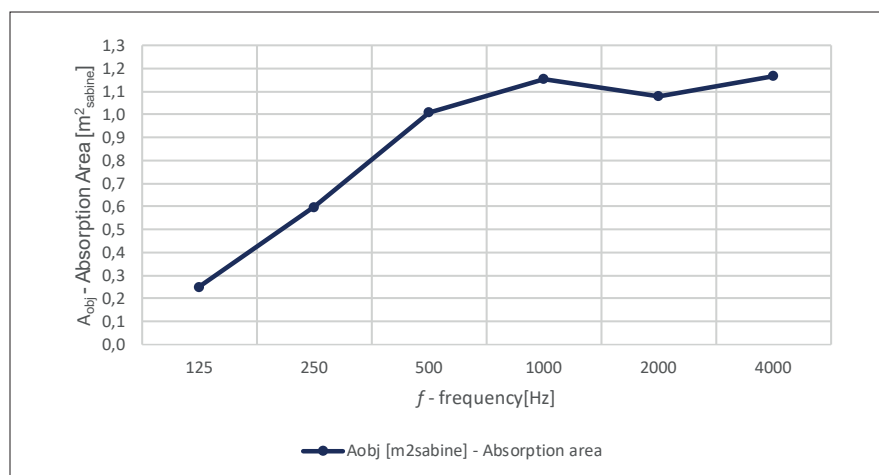
f [Hz]	Aobj [m ²]
Frequency	Absorption Area Equivalent
125	0,26
250	0,60
500	1,00
1000	1,13
2000	1,06
4000	1,17



Test performed with the 70x100 cm size panel with **Fabric Palette Aria** finish.

Sound absorption measured in reverberation chamber (UNI EN ISO 354)

f [Hz]	Aobj [m ²]
Frequency	Absorption Area Equivalent
125	0,25
250	0,60
500	1,01
1000	1,15
2000	1,08
4000	1,17



Test performed with panel size 70x100 cm with **Pantone® printed finish** and **Original**

DURABILITY



LIGHTWEIGHT



EASY TO HANDLE



REMOVABLE



EASY TO CLEAN*

*For optimal panel cleanliness, use a vacuum with a smooth nozzle (without brushing) or a dry microfiber cloth.

SPECIFICATION ITEM: ISOLSPACE FRAME WALL

One-sided sound absorbing panel for wall application, made of ISOLFIBTEC© (a special polyester technical textile fiber), engineered to achieve maximum sound-absorbing capacity and covered with polyester fabric. Applicable visibly in environments using appropriate supports.

Thickness approx. 45 mm.

Variable formats and sizes: rectangular (50x70 cm, 70x100 cm, 100x140 cm), circular (Ø 45 cm, Ø 65 cm, Ø 85 cm, Ø 125 cm), and hexagonal (diagonal 65 cm and diagonal 85 cm).

Finish color to be selected by the Construction Manager.

Available in Original, Pantone®, or fabric-coated versions with Palette Aria and Terranova.

Completely removable upholstery.

Tested in a reverberation chamber and positioned as a discrete object, in accordance with UNI EN ISO 354.

Absence of volatile and harmful organic substances certified by achieving the highest score in VOC (A+)

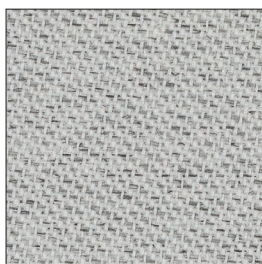
Product compliant with MEC (Minimum Environmental Criteria), with recycled content certified by a third-party organization.

The product components have been fire tested and classified with a result equal to or higher than Euroclass B-s2,d0.

COLOURS AND FINISHES - FABRIC PALETTE ARIA

The Aria color palette offers bright colors alongside more classic shades, to satisfy all tastes. **The covering stands out for the perfect combination of sustainability and technical performance, offering high fire resistance. Made from 100% recycled flame-retardant polyester**, they help make Frame covered in fabric an even more conscious and responsible choice. **The fabrics in the Aria palette comply with OEKO-TEX® STANDARD 100 standards.**

It is possible to produce non-standard and custom colors, subject to feasibility verification and minimum order quantity. Prices may differ from standard colours.



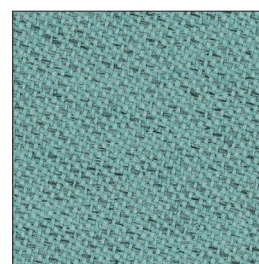
GRIGIO CHIARO /
COD 60114



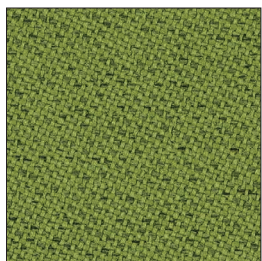
TORTORA /
COD 61175



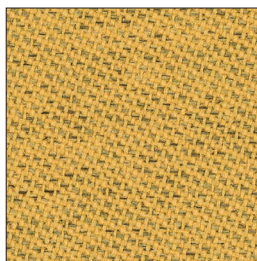
INDACO /
COD 60081



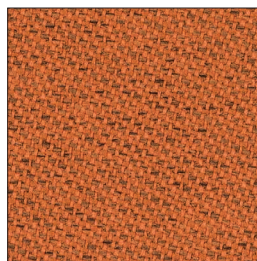
TURCHESE /
COD 68189



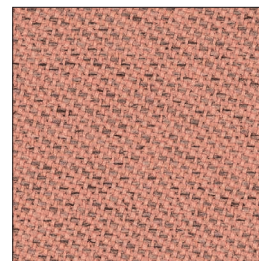
VERDE /
CODICE 68197



CANARINO /
CODICE 62086



ARANCIO /
CODICE 63099



ROSA /
CODICE 63092

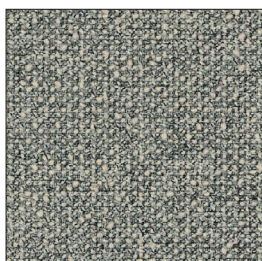
NOTE

Slight color differences may be observed between different supplies. This can occur when different fabric batches are used and cannot be attributed to the company in any way.

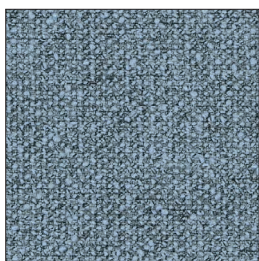
COLOURS AND FINISHES - FABRIC PALETTE TERRANOVA

To address the challenge of textile waste, a collective effort is essential. It is precisely to send a clear message in this direction that Frame has chosen the Terranova palette, which is born from the valorization of textile waste through a process of textile-textile recycling. The shades of the palette recall the earth with exotic suggestions for enveloping and refined ambiances. **The fabrics of the Terranova palette comply with the OEKO-TEX® STANDARD 100 standards.**

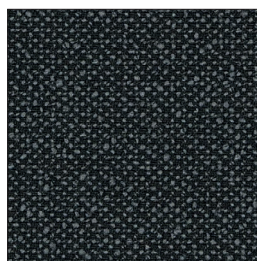
It is possible to produce non-standard and custom colors, subject to feasibility verification and minimum order quantity. Prices may differ from standard colours.



POLVERE /
COD 61310



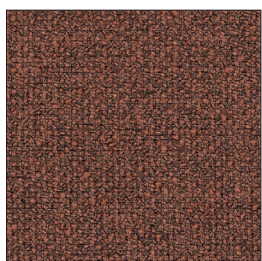
AZZURRO /
COD 66281



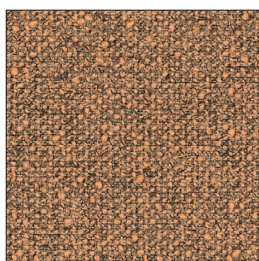
GRIGIO SCURO /
COD 60365



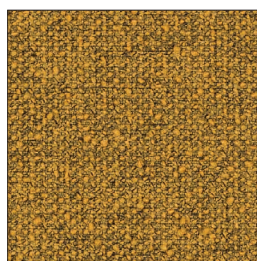
CAFFÈ /
COD 61314



MATTONE /
CODICE 61312



CANNELLA /
CODICE 63148



SENAPE /
CODICE 62154



VERDONE /
CODICE 68321

NOTE

Slight color differences may be observed between different supplies. This can occur when different fabric batches are used and cannot be attributed to the company in any way.

CAUTIONS

This data sheet does not constitute a specification, and if it consists of multiple pages, please ensure you have reviewed the complete document. The guidelines provided reflect our expertise but serve as general recommendations only. Users assume full responsibility for determining product suitability for specific applications and any consequences of use.

Please be aware that panels may exhibit minor variations in thickness and dimensions due to the properties of the materials used in manufacturing

Isospace is a Tecnasfalti brand

via dell'Industria, 12

Loc. Francolino

20074 Carpiano (MI)

T. +39 02 9885701

E. hello@isospace.it

isospace.com