

# SILHOUETTE COLLECTION

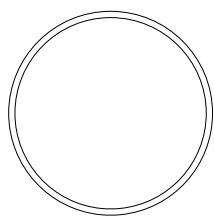
*DESIGNED BY ODEON DESIGN STUDIO*

## **CEILING**

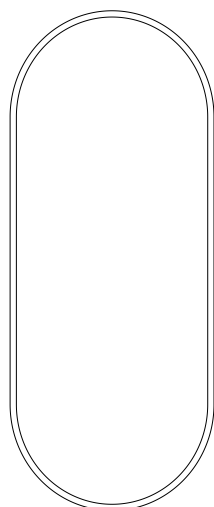
## SILHOUETTE COLLECTION | CEILING

## SIZES

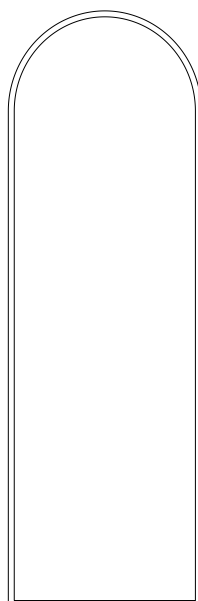
Double-sided structure: approx. 35 mm thick



**S**  
(Ø 39 cm)



**M**  
(39 x 95 cm)



**L**  
(39 x 120 cm)



## FLAME RESISTANCE

---

Euroclass B-s2,d0

## VOLATILE ORGANIC COMPOUND EMISSION

---

VOC A+

Indoor Air Comfort GOLD



NO FORMALDEHYDE

## CAM REQUIREMENTS

---

Complies with the requirements defined by CAM Edilizia for acoustic and thermal insulation materials regarding the demand for high acoustic absorption performance, recycled content percentage, and the absence of hazardous substances.



## REMADE IN ITALY CERTIFICATE

---

REMADE IN ITALY certification is an ACCREDIA-accredited product certification that verifies the recycled content incorporated into each product. This certification is accepted during bidding and awarding phases, in compliance with public procurement regulations and Minimum Environmental Criteria (MEC) requirements.



100% RICYCLABLE



ECO-FRIENDLY

## ENVIRONMENTAL PROTOCOLS

---

Contributes to earning credits for the main environmental building certifications, such as the LEED, BREEAM, WELL, and ITACA protocols.

## SHORT SUPPLY CHAIN

---

The entire lifecycle is managed within Italy, significantly reducing the environmental impact associated with transportation of raw materials, semi-finished products, and the final product.



MADE BY ITALIANS

## HI-TECH MATERIALS

---

Isospace Silhouette Collection solutions are made from ISOLFIBTEC<sup>®</sup>, a special completely non-toxic and hypoallergenic polyester fiber, obtained from recycled PET. This material has a high sound absorption coefficient, is environmentally friendly and long-lasting.

The internal ISOLFIBTEC<sup>®</sup> structure is then covered with fabrics from the different palettes available, materials with a natural weave, soft to the touch but at the same time hard-wearing, easily washable and highly durable. Trevira fabrics are certified with the highest ratings according to Oeko-Tex Standard 100.

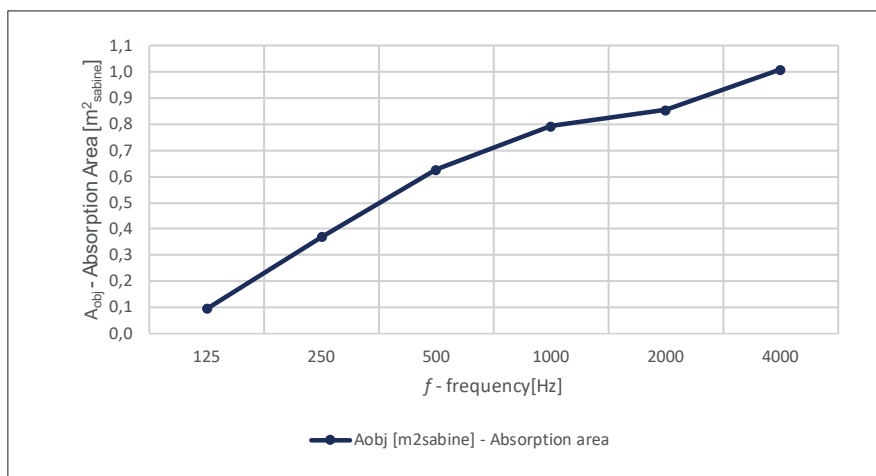


Every square meter of ISOLFIBTEC<sup>®</sup> is produced by recycling 39 PET bottles

## SOUND ABSORPTION

Sound absorption measured in reverberation chamber (UNI EN ISO 354)

f [Hz]	Aobj [m <sup>2</sup> ]
Frequency	Absorption Area Equivalent
125	0,10
250	0,37
500	0,63
1000	0,79
2000	0,86
4000	1,01



Test performed with panel size 120x39cm.

## DURABILITY



LIGHTWEIGHT



EASY TO HANDLE



EASY TO CLEAN\*

\*For optimal panel cleanliness, use a vacuum with a smooth nozzle (without brushing) or a dry microfiber cloth.

## SPECIFICATION ITEM: ISOLSPACE SILHOUETTE CEILING

Modular three-dimensional, double-sided sound absorbing panel for ceiling installation, composed of ISOLFIBTEC® (a special polyester technical textile fiber), engineered to achieve maximum sound-absorbing capacity and covered with polyester fabric.

Thickness approx. 35 mm. Characterised by Silhouette design.

Can be applied visibly in suspended ceiling spaces by means of a ceiling pendant kit.

Variable sizes (Ø 39 cm, 39x95cm, e 39x120cm).

Finishing color to be selected by the Construction Manager; available in single-color or two-tone versions.

Sound Absorption Coefficient Class A tested in reverberation chamber both with air gap (assembly type J) and as Discrete Object according to UNI EN ISO 354.

Absence of volatile and harmful organic substances certified by achieving the highest score in VOC (A+) and Indoor Air Comfort (GOLD).

Product compliant with MEC (Minimum Environmental Criteria), with recycled content certified by a third-party organization.

Euroclass B-s2,d0 fire reaction certification.

## COLOURS AND FINISHES - PALETTE FABRIC - 100% PL TREVIRA CS ECO FABRIC

The Fabric color palette is a refined blend of soft shades and bold, characterful tones, designed for spaces that leave a lasting impression. The upholstery is made of 100% PL Trevira CS ECO fabric, produced using recycled PET from post-consumer bottles. **This fabric stands out for its strong sustainability profile, as the yarn contains at least 50% recycled material. It is GRS (Global Recycled Standard) and OEKO-TEX certified, flame-retardant, and 100% recyclable. Pleasant to the touch, it is easy to clean and highly resistant to wear.**

It is possible to produce non-standard and custom colors, subject to feasibility verification and minimum order quantity. Prices may differ from standard colours.



BURRO /  
COD 14516



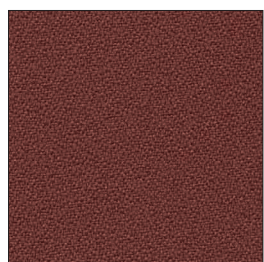
SABBIA /  
COD 14532



OCRA /  
COD 14512



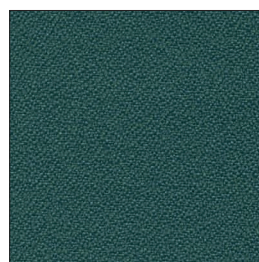
PESCA /  
COD 14188



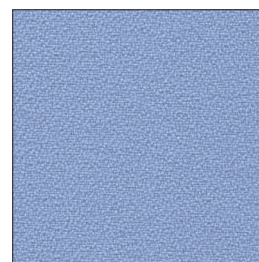
TERRACOTTA /  
CODICE 14589



VERDE MENTA /  
CODICE 14457



PETROLIO /  
CODICE 14411



CELESTE /  
CODICE 14369



BLU NAVY /  
COD 14333



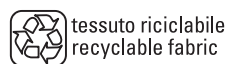
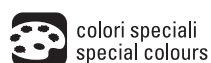
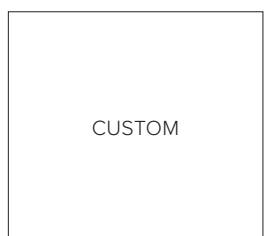
GRIGIO GHIACCIO /  
COD 14629



ANTRACITE /  
COD 14607



PIOMBO /  
COD 14625



## NOTE

**Slight color differences may be observed between different supplies.** This can occur when different fabric batches are used and cannot be attributed to the company in any way.

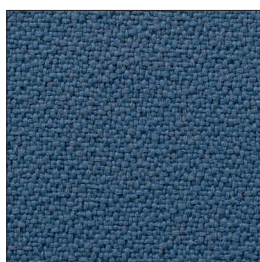
## COLOURS AND FINISHES - PALETTE NATURE S - 100% PL TREVIRA CS ECO

The Nature S color palette is inspired by the natural world, creating refined spaces that promote a genuine and complete sense of well-being. The upholstery is made of 100% PL Trevira CS ECO fabric, produced using recycled PET from post-consumer bottles. **This fabric is highly sustainable, as the yarn contains at least 50% recycled material. It is GRS (Global Recycled Standard) and OEKO-TEX certified, flame-retardant, and 100% recyclable.** Pleasant to the touch, it is easy to clean and highly resistant to wear.

It is possible to produce non-standard and custom colors, subject to feasibility verification and minimum order quantity. Prices may differ from standard colours.



ALPACA / COD 999



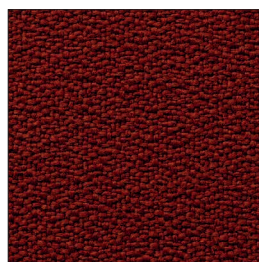
DOLPHIN / COD 377



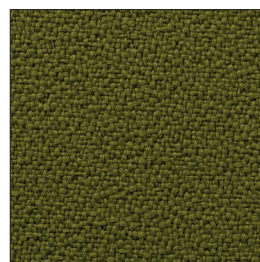
CARIBOU / COD 533



GIRAFFE / COD 119



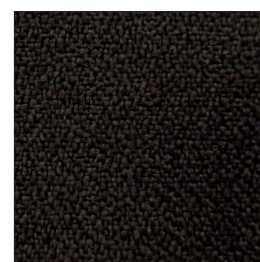
FOX / COD 572



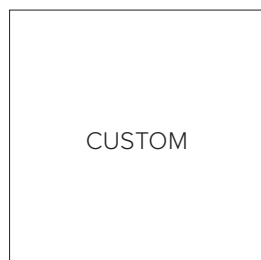
IGUANA / COD 426



WHALE / COD 636



PANTHER / COD 573



## NOTE

**Slight color differences may be observed between different supplies.** This can occur when different fabric batches are used and cannot be attributed to the company in any way.

## COLOURS AND FINISHES - PALETTE MELANGE

The **Melange palette** was created to satisfy those who prefer shaded effects over flat, uniform colors. The interweaving of yarns in various tones gives melange fabrics a dynamic look, resulting in textures that are both subtle and original.

**The upholstery is made of PL FR fabric, inherently fire-retardant, recycled and recyclable, and OEKO-TEX certified.**

It is possible to produce non-standard and custom colors, subject to feasibility verification and minimum order quantity. Prices may differ from standard colours.



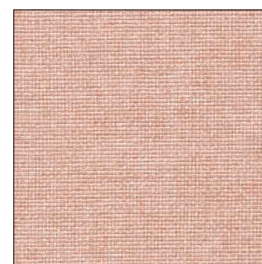
GRIGIO CHIARO /  
COD 4613



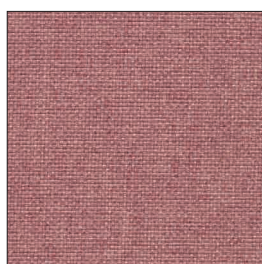
LINO /  
COD 4515



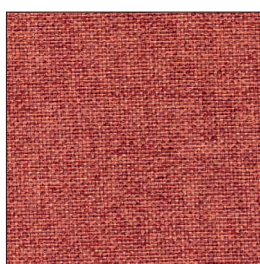
TORTORA /  
COD 4513



ROSA CIPRIA /  
COD 4153



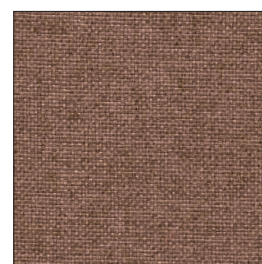
ROSA ANTICO /  
COD 4154



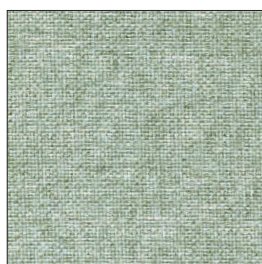
MATTONE /  
COD 4211



GRAFITE MÉLANGE /  
COD 4559



TERRA /  
COD 4155



VERDE SALVIA /  
COD 4466



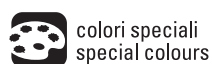
MUSCHIO /  
COD 4468



OLIVA /  
COD 4462



FUMO /  
COD 4615



## NOTE

**Slight color differences may be observed between different supplies.** This can occur when different fabric batches are used and cannot be attributed to the company in any way.

## COLOURS AND FINISHES - PALETTE VELVET

---

The Velvet palette is ideal for those looking for floor coverings that stand out due to their exceptional softness. The incomparable feel of the Velvet palette is matched by its strong-personality colours, which can be mixed together to create soft or aggressive environments, always with a guaranteed wow effect.

It is possible to produce non-standard and custom colors, subject to feasibility verification and minimum order quantity. Prices may differ from standard colours.



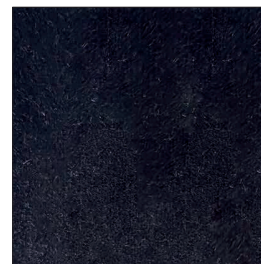
BEIGE /  
COD 001



PEARL /  
COD 002



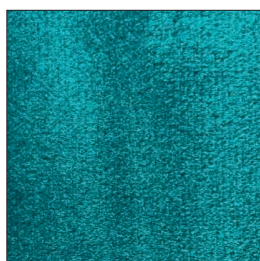
STEEL /  
COD 003



DEEP BLUE /  
COD 004



OCTANE /  
COD 005



PETROL /  
COD 006



ELEPHANT /  
COD 007



FOREST /  
COD 008



CUOIO /  
COD 009



GOLD /  
COD 010



SALMON /  
COD 011



PINK /  
COD 012

### NOTE

---

**Slight color differences may be observed between different supplies.** This can occur when different fabric batches are used and cannot be attributed to the company in any way.

## CAUTIONS

---

This data sheet does not constitute a specification, and if it consists of multiple pages, please ensure you have reviewed the complete document. The guidelines provided reflect our expertise but serve as general recommendations only. Users assume full responsibility for determining product suitability for specific applications and any consequences of use.

Please be aware that panels may exhibit minor variations in thickness and dimensions due to the properties of the materials used in manufacturing

**Isospace is a Tecnasfalti brand**

via dell'Industria, 12

Loc. Francolino

20074 Carpiano (MI)

T. +39 02 9885701

E. [hello@isospace.it](mailto:hello@isospace.it)

[isospace.com](http://isospace.com)